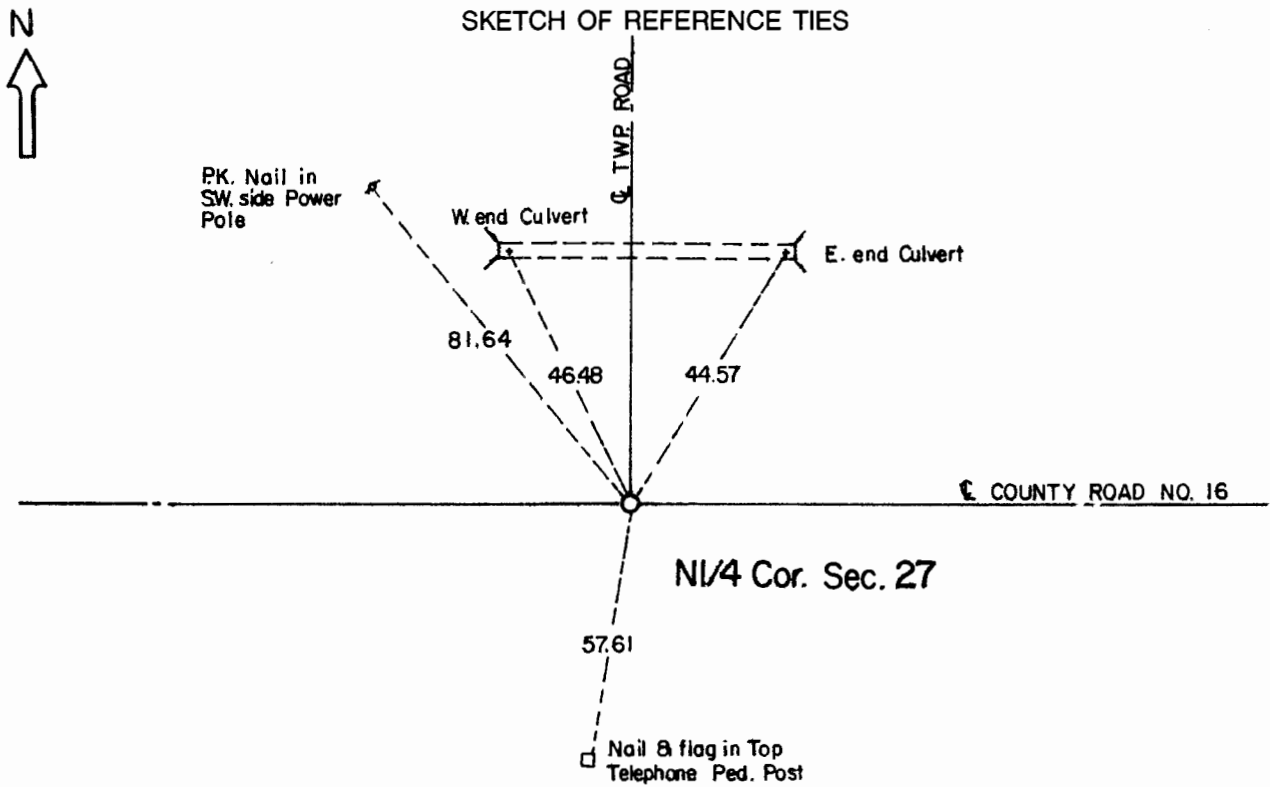


CERTIFICATE OF LOCATION OF GOVERNMENT CORNER

North Quarter Corner of Section **27** , Township **108** , Range **41** 5th P.M.

STATE OF MINNESOTA, County of Murray.

Statement: Aug. 9, 1989 - Found an 8 inch x 12 inch x 18 inch field stone below the road surface. Placed a Minnesota Department of Transportation Cast Iron Monument.



Statement of evidence relative to this corner location is on the back of page.

I hereby certify that this document and the data contained herein was prepared by me or under my direct supervision and that I am a duly Registered Land Surveyor under the laws of the State of Minnesota.

Duane A. Bonnema Nov 6, 1989
 Duane A. Bonnema Date

Minnesota Registration No. 14895

OFFICE OF THE COUNTY RECORDER
 COUNTY OF MURRAY **NOV 15 1989**

I hereby certify that this document was filed in the County Recorder's office at ___M. on the ___ day of _____ A.D., 19__

County Recorder *James V. Johnson*

By _____, Deputy

DOCUMENT NO. _____

North Quarter Cor. Sec. 27 T108N-R41W

Statement:

August 1861 Original Government Land Office Surveyor L. G. M. Fletcher records in his field notes, "Set post-built mound with trench pits, charred stake per instruction."

Date Unknown The Murray County Surveyor records in the County Surveyor's Record Book "stone" and shows that he made some witness ties to the Corner. He doesn't state the size of the stone.

April 1972 The Murray County Highway Engineer's Office records that they found a field stone and that they placed a 3/4" diameter bolt above the stone at the Corner. They also established 3 witness ties to the Corner.

Aug. 9, 1989 Duane A. Bonnema, LS Reg. No. 14895, found an 18 inch x 8 inch x 12 inch field stone 2 feet below the surface. One of the 1972 County witness ties was found and verified. He placed a Minnesota Department of Transportation Cast Iron Monument.